

### IPcoax 1400



**Application:** FTTH for Multiple Dwelling Units **WAN Interface:** Point to Point single GigE or Gigabit E-Ring with Two GigE Ports **Service Ports:** Four 100Mbps HPNA 3 ports with optional RF CATV, Four optional RF Coax Video inputs, one 10/100Mbps Ethernet Admin Port

**Interoperable with:** GigE ports on Ethernet switches (Cisco, Force10, Foundry, etc.). GigE ports on Broadband DLCs (Occam, Calix, Tellabs, Alcatel), SONET/SDH platforms, All RHINO E-Ring

**Application:** FTTH for Multiple Dwelling Units **WAN Interface:** Point to Point single GigE or Gigabit E-Ring

### IPcoax 1410



**Application:** FTTH for Multiple Dwelling Units with VLAN termination and tagging **WAN Interface:** Point to Point single GigE or Gigabit E-Ring with Two GigE Ports **Service Ports:** Four 100Mbps HPNA v3.1 ports with optional RF CATV, Four optional RF Coax Video inputs, one 10/100Mbps Ethernet Admin Port

**Interoperable with:** GigE ports on Ethernet switches (Cisco, Force10, Foundry, etc.). GigE ports on Broadband DLCs (Occam, Calix, Tellabs, Alcatel), SONET/SDH platforms, All RHINO E-Ring

**Application:** FTTH for Multiple Dwelling Units **WAN Interface:** Point to Point single GigE or Gigabit E-Ring

### IPcoax 2400



**Applications:** FTTH for MDU single IP service, IP Video Camera Transport **WAN Interface:** Point to Point single GigE or Gigabit E-Ring with Two GigE Ports **Service Ports:** Twenty four 10Mbps HPNA 3 ports, one 10/100Mbps Ethernet Admin Port

**Interoperable with:** GigE ports on Ethernet switches (Cisco, Force10, Foundry etc.). GigE ports on Broadband DLCs (Occam, Calix, Tellabs, Alcatel), SONET/SDH platforms, All RHINO E-Ring

### CEB-402



**Application:** Single residence HPNA 3 over existing coax **Coax Interface:** HPNA 3 **Service Ports:** Two 10/100 Ethernet Ports with RJ-45 jacks

**Key Features:** Can be configured as Master or Client, Lowband and Midband versions

**Interoperable with:** HPNA 3 ports on all RHINOs, IPcoax 2400, other HPNA 3 masters or clients including HPNA enabled IPTV set-top boxes

### CEB-411



**Application:** Single residence HPNA 3 over existing coax **Coax Interface:** HPNA 3

**Service Ports:** One 10/100 Ethernet Ports with RJ-45 jack

**Key Features:** Can be configured as Master or Client, Lowband and Midband versions

**Interoperable with:** HPNA 3 ports on all RHINOs, IPcoax 2400, other HPNA 3 masters or clients including HPNA enabled IPTV set-top boxes

### CEB-512



**Application:** Multiple Dwelling Units HPNA 3 over existing coax

**Coax Interface:** HPNA 3 Midband

**Service Ports:** Two 10/100 Ethernet Ports with RJ-45 jacks

**Key Features:** Used as HPNA client in Units to provide data privacy

**Interoperable with:** IPcoax 1400/1410 FTTH MDU platform HPNA ports

### SEB-401



**Application:** Single residence HPNA 3 over existing coax to Amino Set-top box

**Coax Interface:** HPNA 3 **Service Ports:** 10/100 Ethernet port to Amino, DC power adapter

**Key Features:** Configured as Client, Lowband and Midband versions available

**Interoperable with:** HPNA 3 ports on all RHINOs, IPcoax 2400, other HPNA 3 masters. Smartfoot supports Amino 110, 120, 125 and 130 set-top boxes

### RHINO IPC

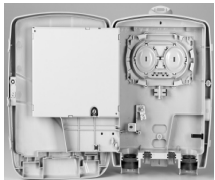


**Application:** IP Video Cameras, FTTH MDU **WAN Interface:** Point to Point single GigE or Gigabit E-Ring with Two GigE Ports

**Service Ports:** Four 10/100 Ethernet Ports, One HPNA V3.1 port MDU enabled

**Interoperable with:** GigE ports on Ethernet switches (Cisco, Force10, Foundry, etc.). GigE ports on Broadband DLCs (Occam, Calix, Tellabs, Alcatel), SONET/SDH platforms, RHINO GTO-R3

### RHINO Outdoor Enclosures



**Application:** All outdoor or environmentally hardened situations **Cable Interface:** Fiber Drop cables for Splice/Connectors, OptiTap Connector optional Ground connection, cables to home

**Optical connector bulkhead:** dual LC to LC connectors standard

**Identical to:** Corning OptiWay enclosure

**Interoperable with:** All FTTH network construction practices

### UPS Power Supply



**Application:** Power holdover for IPcoax 1400 and RHINO +12V input

**AC Interface:** 87-246VAC, 40-70Hz

**Alarm Ports:** On Battery, Replace Battery, Battery Missing, Low Battery

**Identical to:** CyberPower CS24U12V

**Interoperable with:** All IPcoax and RHINOs with 12V input connector

### Optical SFPs

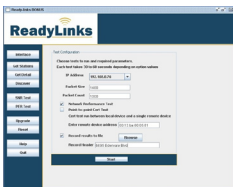


**Application:** All optical IPcoax and RHINO WAN and GigE ports **Speed:** 100Mbps and 1Gbps

**Media types:** Single mode: single fiber, dual fiber, Multimode dual fiber, Cat5e copper

**Interoperable with:** All ReadyLinks Optical SFP slots, several GigE or 100Mbps ports on Gigabit Ethernet switches (Force10, Foundry, etc.), several Broadband DLCs (Occam, etc.)

### BONUS Software



**Application:** HPNA Device and Network Management. Performs: HPNA Network Auto-Discovery, Device Administration, HPNA link Testing, HPNA device Firmware Download

**Host Computers:** Windows XP, Windows Vista, Linux

**Interoperable with:** All ReadyLinks HPNA 3 equipped IPcoax and RHINO products

Note: specifications are subject to change. v2